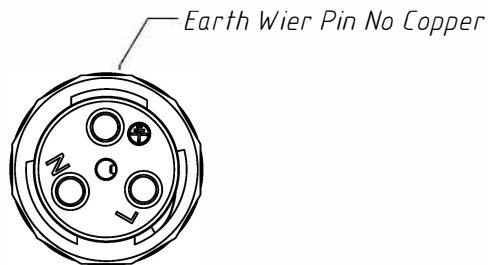


1 RoHS Compliance



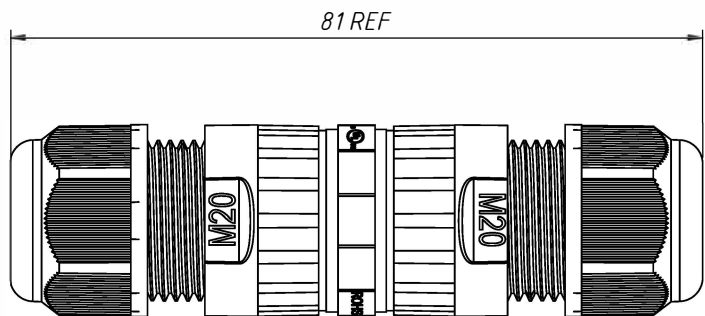
6	7	8
REV	SYM	Revision Record
V0		New Version Release
		Appr.
		Date
		2024-06-15



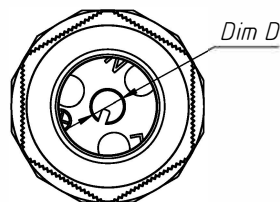
3Pin Connector

Material:
 Housing: PA66, UL 94 V-0, Black
 Contact: Copper Alloy, Nickel plated
 IP rating: IP68
 Number of poles: 2P/3P/4P/5P/6P

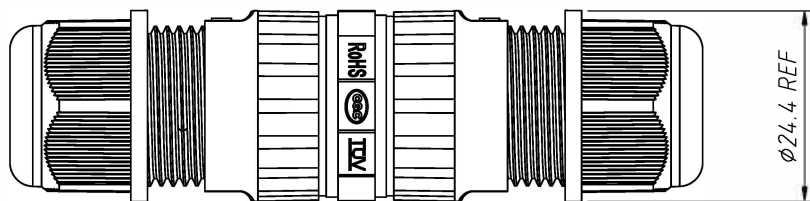
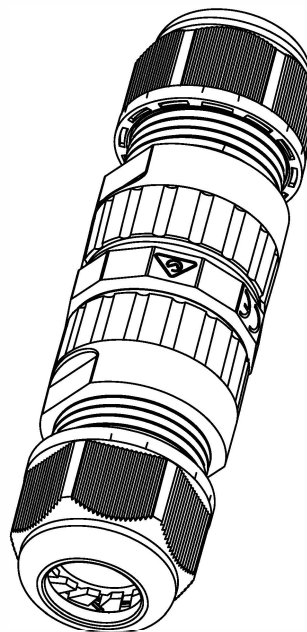
Electrical:
 Rated current: 2P/3P/4P: 24A
 5P/6P: 16A
 Rated voltage: AC 400V
 Withstand voltage: AC 2500V
 Wire section: 2P/3P/4P: 0.5~2.5mm²
 5P/6P: 0.5~1.5mm²
 Operating temperature: -40°C~+105°C
 Certification: UL/CQC/RoHS/CE/TUV/SAA



81 REF

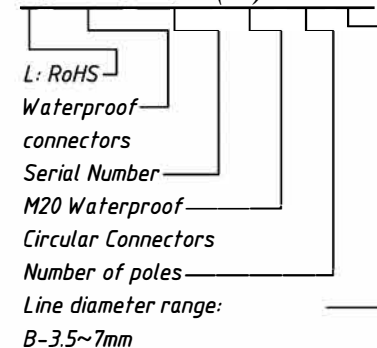


Dim D



24.4 REF

Order Information:
WPP0-(3P)M9



$\phi 11.5mm$	$\phi 9-12mm$
$\phi 8.5mm$	$\phi 5-9mm$
$\phi 6.5mm$	$\phi 3.5-7mm$
$\phi 5mm$	$\phi 3-5mm$
Rubbers Diameter D	Outer Cable Diameter

ANGLE TOLERANCE	PROJECTION	Description:	M20 Waterproof Circular Connectors, IP68, Screw Locking Type
$\pm 3^\circ$			
GENERAL TOLERANCE	UNITS	mm	P/N:
x. ± 0.35	SHEET SIZE	A4	
x.x ± 0.20	Draw:	Jenny	2024-06-15
x.xx ± 0.10	Check:	Daniel	2024-06-15

WPP0-M9-12-A