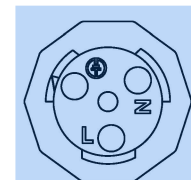
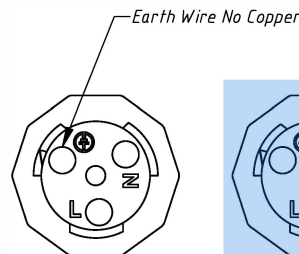
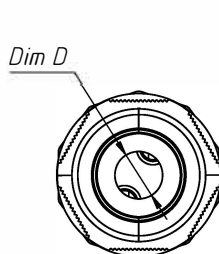
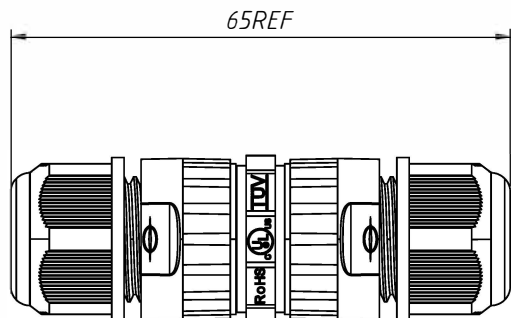


1 RoHS Compliance

6	7	8
REV	SYM	Revision Record
V0		New Version Release
		Appr.
		Date
		2024-06-17

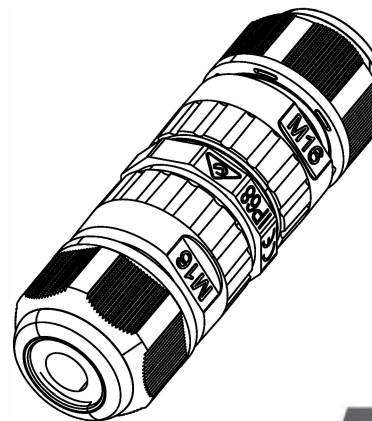
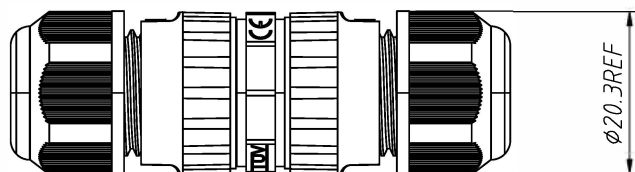


2Pin Connector

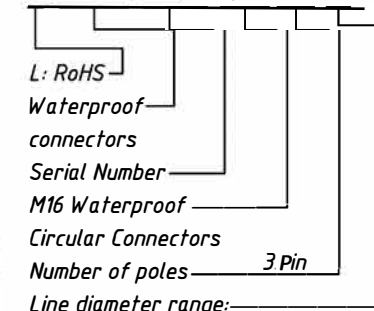
3Pin Connector

Material:
 Housing: PA66, UL 94 V-0, Black
 Contact: Copper Alloy, Nickel plated
 IP rating: IP68
 Number of poles: 2P/3P

Electrical:
 Rated current: 17.5A
 Rated voltage: AC 450V
 Withstand voltage: AC 2500V
 Wire section: 0.5~1.5mm²
 Operating temperature: -40°C~+105°C
 Certification: UL/CQC/RoHS/CE/TUV/SAA



Order Information:
WPP0-M7-10-A



C-7 10mm



$\phi 6.5mm$	$\phi 3.5-7mm$
$\phi 8.1mm$	$\phi 5-8mm$
$\phi 9.8mm$	$\phi 7-10mm$
Rubbers Diameter D	Outer Cable Diameter

ANGLE TOLERANCE	PROJECTION	Description:	M16 Waterproof Circular Connectors, IP68, Screw Locking Type
$\pm 3^\circ$			
GENERAL TOLERANCE	UNITS	mm	P/N:
x. ± 0.35	SHEET SIZE	A4	
x.x ± 0.20	Draw:	Jenny	2024-06-17
x.xx ± 0.10	Check:	Daniel	2024-06-17

WPP0-M7-10-A