

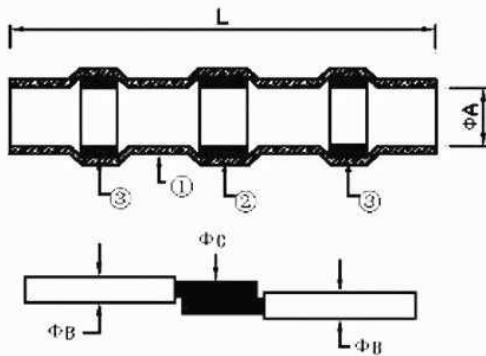
SST-S21-R

Arlex®

Product specifications

Part Number	Product Dimensions (mm)		Wite Dimensions (mm)			Cable size	Color	Qty
	A(min)	L(min)	B(min)	B&C(max)	C(min)	A.W.G(mm ²)		
SST-S11-W	1.7	26	1.0	1.7	0.76	25-24(0.25-0.34)	White	25
SST-S21-R	2.7	40	1.4	2.7	1.2	22-18(0.5-1.0)	Red	35
SST-S31-B	4.5	40	2.4	4.5	2.0	16-14(1.5-2.5)	Blue	30
SST-S41-Y	6.0	40	3.7	6.0	3.4	12-10(4.0-6.0)	Yellow	10

- 1 Heat shrinkable tubing
- 2 Low temperature solder sleeve
- 3 waterproof hot melt adhesive



Method of operation:

Step 1: Use scissors to tighten the terminals

Step 2: Inserts them into the terminals.

Step 3: Heating.

Ready! Waterproof + Insulated + Stable.

For more information, see that: <https://www.youtube.com/watch?v=7Wh5gM8GM70>